

- Back**
- o Flat Cable Connectors SEK
 - o *har-mik®*
 - o D-Sub
 - o InduCom

- **Applications**

Product details

09 67 037 4701

D-Sub - S cable connector

Gender	Female connector
Termination	Crimp
Number of contacts	37
Flange	through hole 3.1 mm
Shell	tinned metal shell
Material	PBTP
Contact configuration	contacts must be order separately
RoHS compliant	Yes

Inquiry

Available Downloads

Title	Format	
Data sheet	PDF	download
CAD data 2D	DXF	download

Product news

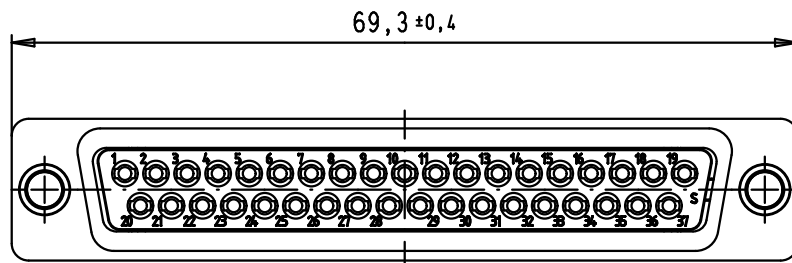
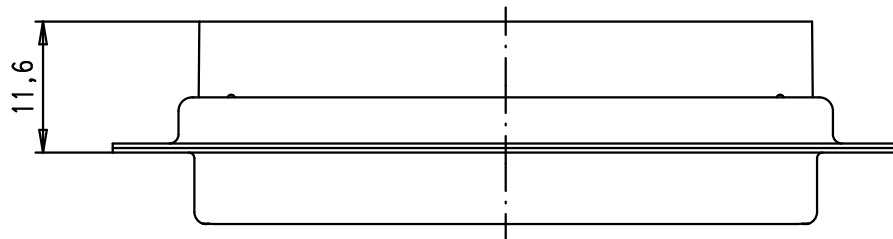
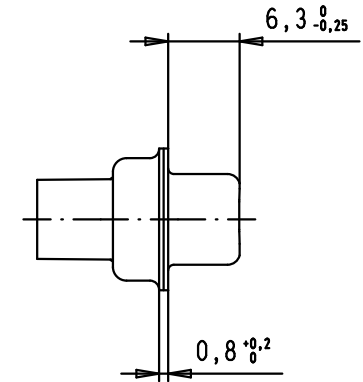
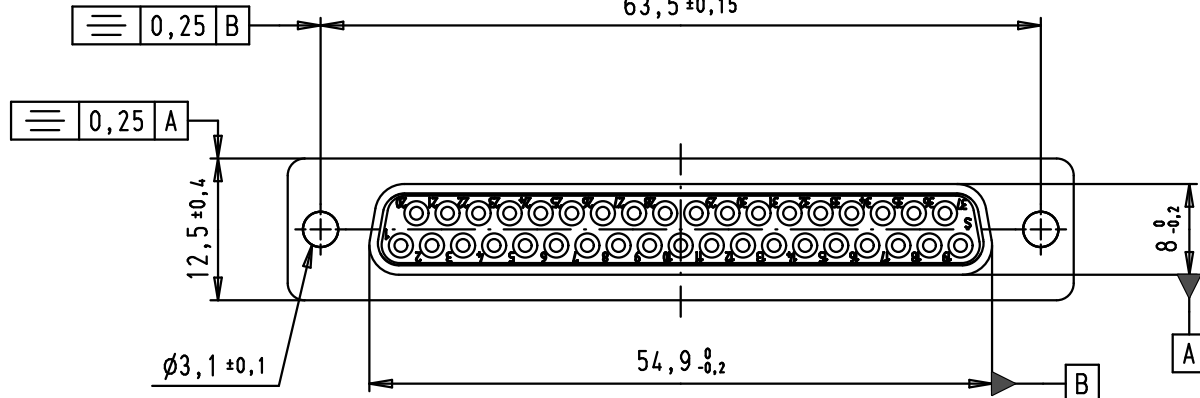
5

4

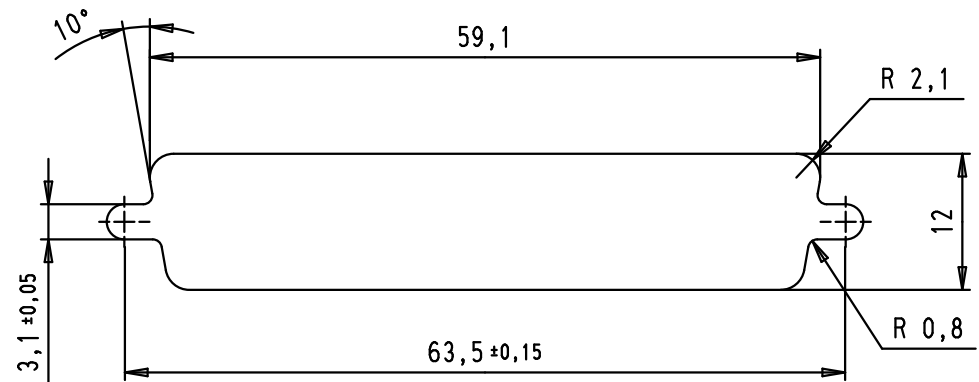
3

2

1



Panel cut out

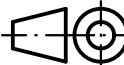



D

C

B

A

Mod.	Dot.	Name	Dot.	Name	 All Dim. in mm Orig. Size DIN A 4	
34784	13/02/08	PK	Detail.	09/04/02		CV
33106	22/09/05	JMDR	Insp.			
31571	12/11/03	SH	Stand.			
31526	31/07/03	TCP				
29768	09/04/02	CV	HARTING EURL F-95972 Paris			

D-Sub, female, straight,
37 poles, for crimp contacts
AWG 20-24, tin plated shell

TB 09 67 037 4701

Sub.

Maßstab/
Scale
1,5:1

Blatt/ Page
1 / 2